

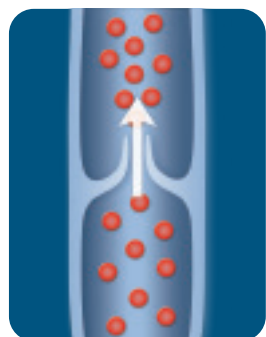


## Understanding Venous Reflux Disease

Healthy leg veins contain valves that open and close to assist the return of blood back to the heart. Venous reflux disease develops when the valves that keep blood flowing out of the legs and back to the heart become damaged or diseased. As a result, vein valves will not close properly, leading to symptoms of:

- Varicose veins
- Pain
- Swollen limbs
- Leg heaviness and fatigue
- Skin changes and skin ulcers

*Superficial venous reflux disease is progressive — symptoms can worsen over time if left untreated.*



Healthy Vein Valves & Correct Blood Flow



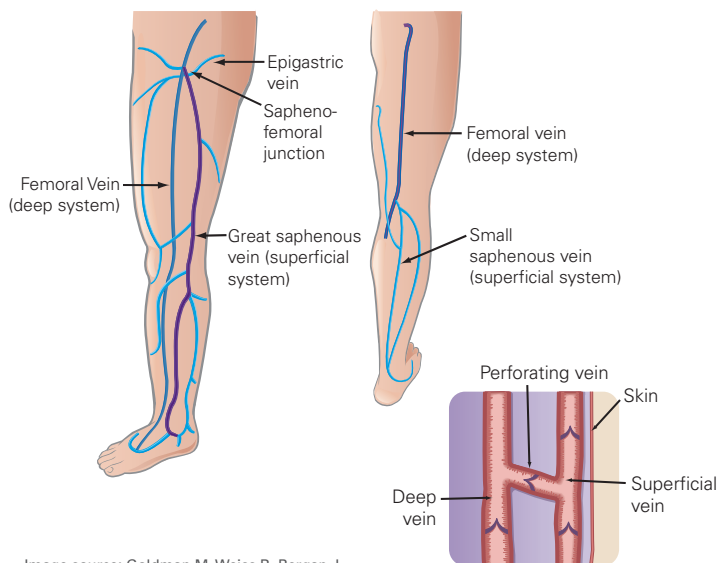
Damaged Vein Valve & Incorrect Blood Flow

## The Venous System Anatomy

The venous system is made up of a network of veins, including:

- Superficial veins – veins located close to the surface of the skin.
- Deep veins – larger veins located deep in the leg.
- Perforator veins – veins that connect the superficial veins to the deep veins.

The Closure procedure treats venous reflux disease in superficial venous system, often the underlying cause of painful varicose veins.



Perforating veins connect the deep system with the superficial system

Image source: Goldman M, Weiss R, Bergan J, et al eds. Varicose Veins and Telangiectasias: Diagnosis and Treatment. Quality Medical Publishing, Inc. 1999

## Are You a Candidate?

Many factors contribute to the presence of venous reflux disease, including:

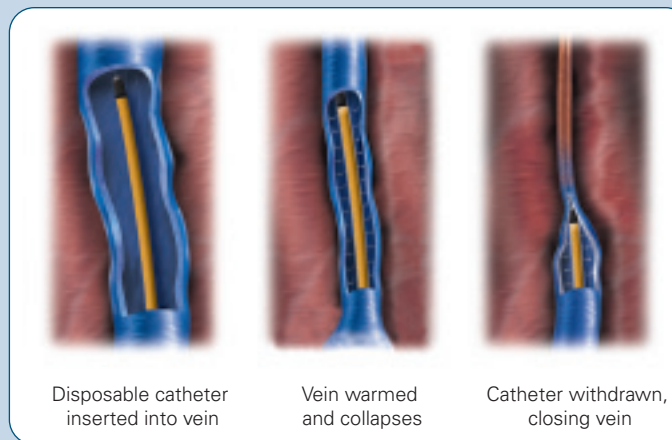
- Age
- Gender
- Family history
- Multiple pregnancies
- Obesity
- Standing profession

Using ultrasound to scan your leg(s), your physician will determine if superficial venous reflux is present.

Speak with your physician about determining your candidacy for the Closure procedure.

## Experience the VNUS Closure™ Procedure

The Closure procedure is performed on an outpatient basis. Using ultrasound, your physician will position the Closure catheter into the diseased vein through a small opening in the skin. The tiny catheter powered by radio-frequency(RF) energy delivers heat to the vein wall. As the thermal energy is delivered, the vein wall shrinks and the vein is sealed closed. Once the diseased vein is closed, blood is re-routed to other healthy veins.



## Varicose Vein Stages



## Procedural Highlights

Closure procedural highlights include:

- Relief of symptoms
- Outpatient procedure
- Local anesthesia
- Resume normal activities within 1-2 days
- Good cosmetic outcome with minimal or no scarring

## Visual Results

### Varicose Veins



Pre-treatment

Post-treatment\*

\*Individual results may vary.

### Ulcers



Before treatment

+14 weeks

*The Closure procedure is covered by most insurances.*